



Superior Community Working Group (CWG)

January 11, 2023 Meeting Summary

CWG Members Present

1. Arlynn Godinez, Superior Resident
2. Alexis Rivera, Miami Town Manager
3. Bruce Wittig, Queen Valley Fire Department
4. Fernando Shipley, City of Globe/Cobre Valley Regional Medical Center
5. Jim Schenck, Rebuild Superior, Legends of Superior Trail
6. Joanne Besich, Optimists of Superior
7. Lynne Nemeth, Boyce Thompson Arboretum
8. Mila Besich, Mayor of Superior
9. Nathan Taylor, Superior Resident
10. Pam Bennett, Queen Valley Resident
11. Silvia Ware, Citizen, Top of the World (Zoom)
12. Todd Pryor, Superior Town Manager (Zoom)
13. Darcy Anderson (RUG/Zoom)

Resolution Copper Company

1. Dave Richins
2. Bryan Seppala

Arizona Department of Transportation

1. Fiona de Young (Zoom)
2. Courtney King
3. Tricia Brown

CWG Facilitators – Godec, Randall & Associates (GRA)

1. John Godec
2. Jody LoMenzo (Zoom)

The Superior Community Working Group (CWG) received an update the Arizona Department of Transportation (ADOT) about the planned replacement of both the Queen Creek Bridge and the

Waterfall Canyon Bridge. These projects will be done concurrently in 2023. To date, no contractor has been awarded the work.

The members of the CWG raised questions regarding the status of the existing Queen Creek Bridge, which ADOT said has no immediate plans to raze but ultimately that would be the case.

Note: the Queen Creek Bridge is on Resolution Copper property.

Concerns include:

- The possibility of saving the bridge for future use as a pedestrian walkway
 - What entity could be responsible to manage the bridge, maintain upkeep and accept liability.
 - Costs to maintain bridge
- Potential blight as a result of old bridge decaying
- Maintaining the conditions of existing trails
- Impact on Rt. 60 traffic and travel times to from the Superior region
- Economic impact on the Superior region during road closures
- Health/Safety/EMS Impact, due to road closures
 - How to get people to critical care centers
 - Ensure plans to get people to hospitals
- Impact on hiking trails, recreation users in this much in demand recreation area
- Preserving endangered natural flora and fauna
 - Saguaro cacti – the Boyce Thompson Arboretum’s Lynne Nemeth volunteered to help with consultation on transplant and protection

Representatives from ADOT answered some questions and said they would get answers and respond in a timely fashion.

- A runaway truck ramp would remain on Rt. 60
- Endangered plants will be harvested for transplant
- Attempts to restore landscaping will be made

A copy of the ADOT presentation follows.

Queen Creek and Waterfall Canyon Bridges Project Update

Superior Recreational User Group meeting

Jan 11, 2023

Agenda

- Overview (Queen Creek/Waterfall Canyon)
- Timeline
- Tentative Traffic Restrictions
- Anticipated Recreational Access
- Other Items
- Questions/Discussion



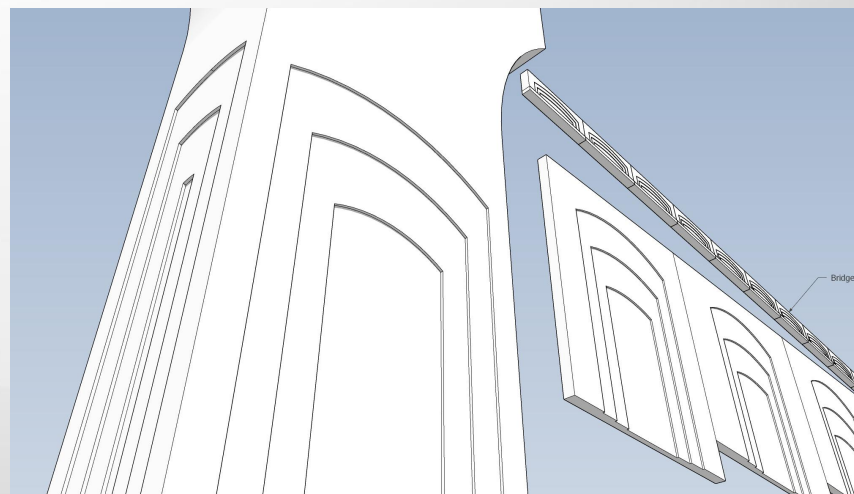
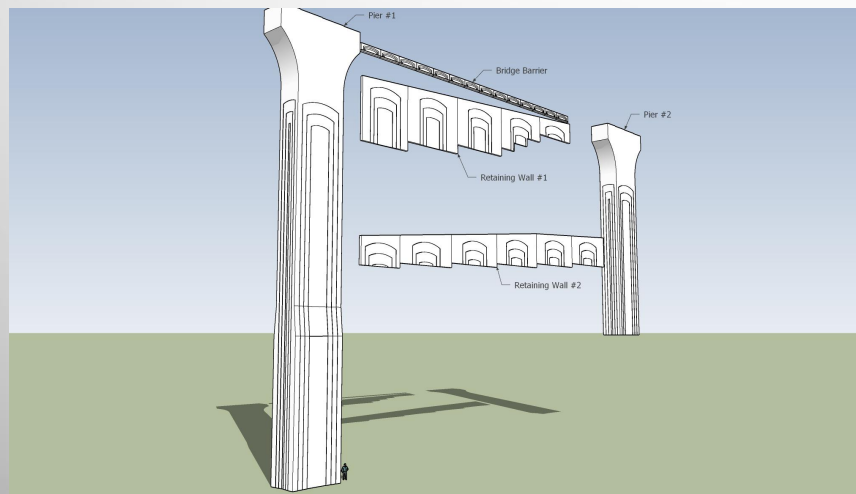
Queen Creek Bridge



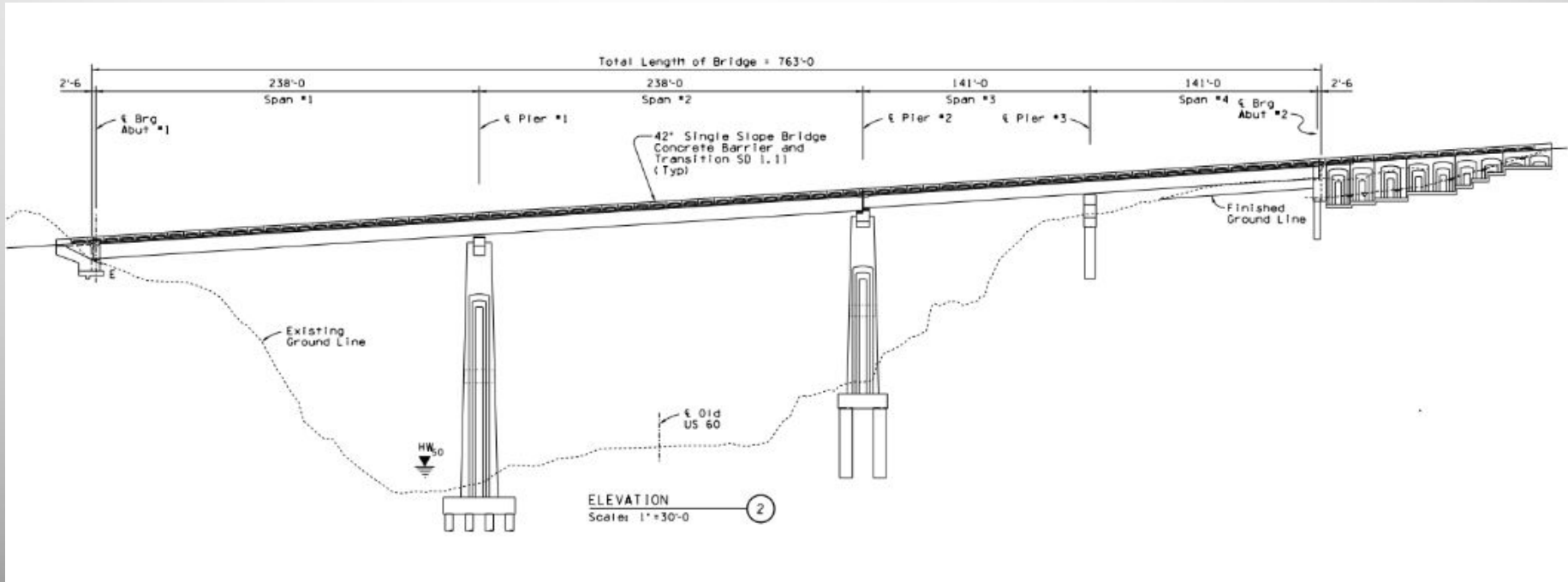
Queen Creek Bridge Overview

- Construct a new bridge just east of the existing bridge
- Project generally similar to the recently-completed Pinto Creek Bridge
- Existing bridge remains in place and with plans to install fencing to restrict access

Queen Creek Bridge Overview



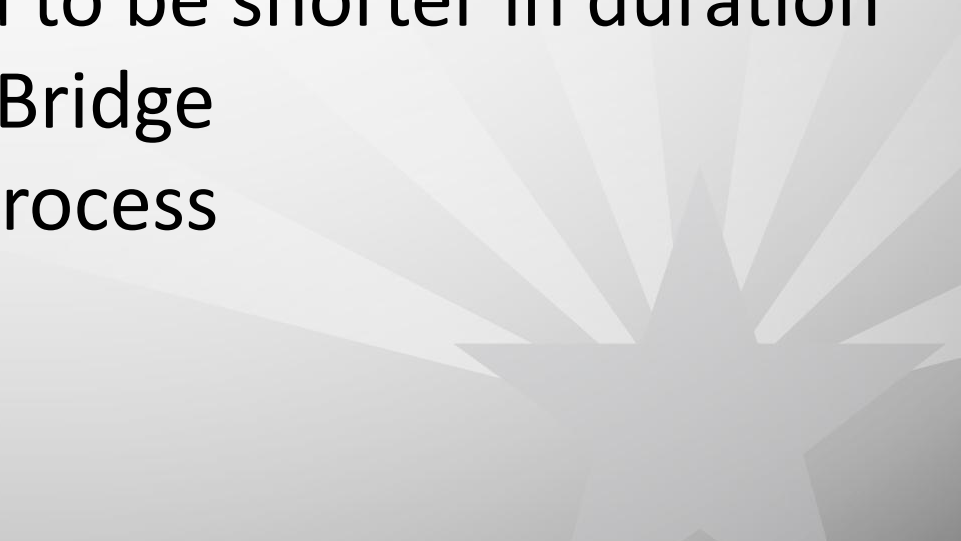
Queen Creek Bridge Overview



Waterfall Canyon Bridge



Waterfall Canyon Bridge Overview

- Replace existing bridge in the same location
 - Work is anticipated to be shorter in duration than Queen Creek Bridge
 - Still in the design process
- 

Estimated Timeline

- Bid advertising in spring 2023
- Construction to begin in early summer 2023
- Approximately two year duration overall
 - Queen Creek will drive the total duration
 - Waterfall Canyon will fall within the Queen Creek project (avoiding bird seasons, monsoons, other constraints)
 - Sequencing to be determined by contractor

Tentative Traffic Restrictions

- Full closures of US 60 for rock blasting on specific weekdays during the midday period
- Up to a week full closure of US 60 possible for tie-ins
- Intermittent lane restrictions throughout construction (flaggers/delays)
- Restrictions to be scheduled concurrently between projects to the greatest extent possible
- For latest traffic updates, consult project website and sign-up for alerts.

Anticipated* Recreational Access

Waterfall Canyon Area (east of Queen Creek Tunnel)

- Closed during blasting activities at Queen Creek
- **No access** during the Waterfall Canyon project
 - Nearby pull-outs will be needed for staging due to very limited space at the construction site
 - Road width narrowed
 - Bridge will be under construction with no safe access for pedestrians underneath

*Contractor could propose different sequencing, access, etc.

Anticipated* Recreational Access

Concrete Historic Bridge to Claypool Tunnel

- Closed to recreational use
- Inaccessible, unsafe for pedestrians
- Access road and primary work zone conflicts
- Heavy equipment (safety and security concerns)
- Loose material and temporary modifications

*Contractor could propose different sequencing, access, etc.

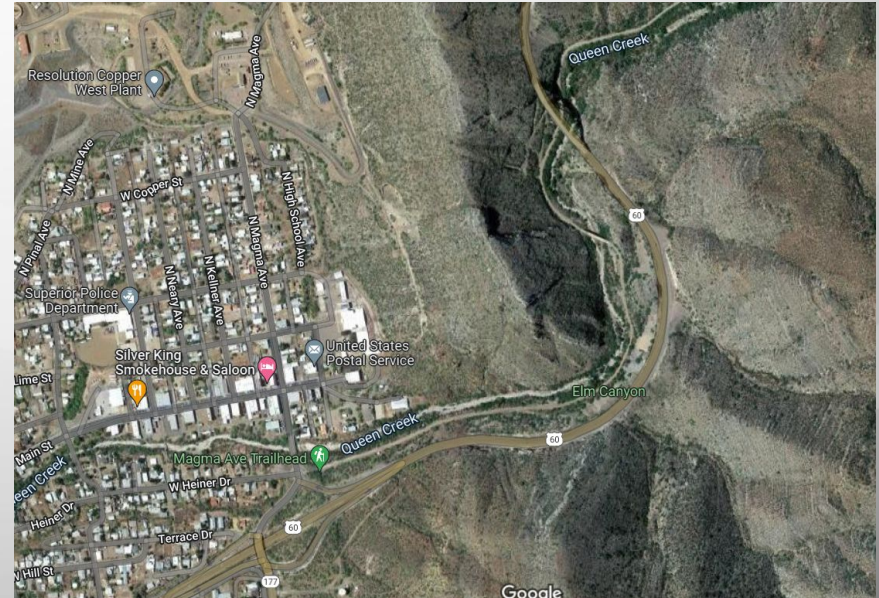


Anticipated* Recreational Access

Superior to Queen Creek Bridge

- Route may be used for light vehicles (pickups)
- Closed beyond the historic concrete bridge for the duration of the project
- Closed during all blasting activities
- Open intermittently from Superior to the concrete bridge based on public safety / contractor's use

*Contractor could propose different sequencing, access, etc.



Other Items

Use of the Steel Bridge upon completion

- To be fenced off as part of the project.
- Discussion about other uses must begin with a responsible party (Town, mine, etc.) for liability reasons.

Condition of trails post-project

- Provisions to require restoration of the trail to a similar condition as before construction (removal of hauled in material for access road, seeding, etc.)
- No “improvements” planned
- Plan outlined would minimize impact on the historic trail long-term.

Other Items Continued

Pull-outs near Waterfall Canyon Bridge

- Not a part of either project
- Contractor must restore any use/damage of parking areas
- No directional/trail signs planned

Communications/Outreach

- Developing preliminary contact list
- Pinto Creek list as a starting point
- RUG contacts
- Other groups?

Other Items Continued

Next step

- Outreach prior to construction

Questions/Discussion



Thank you!

For more information, or to ask additional questions, please contact:

Fiona de Young/Community Relations Project Manager

Phone: 520.388.4233

Email: Fdeyoung@azdot.gov

Courtney King/Community Relations Supervisor

Phone: 480.549.3504

Email: CKing3@azdot.gov